



Omega



1 **Unpack Counter and Accessories**

When unpacking the Omega be sure the following items are included:

- Omega Traffic Counter
- Black Plastic Cover
- Tube End Caps (red covers)
- Magnet Keychain
- Long shank pad lock
- Bluetooth® USB adapter* (optional)
- USB cable (optional)



*Optional Bluetooth® USB adapter is not necessary if PC already has Bluetooth® installed or counter is not going to be used with a Bluetooth® wireless link. If you did not order a Bluetooth® adapter, we recommend the TRENDnetTBW-101UB. Although any approved Bluetooth® adapter will work, Diamond Traffic Products recommends this USB adapter because of the ease of installation and use.

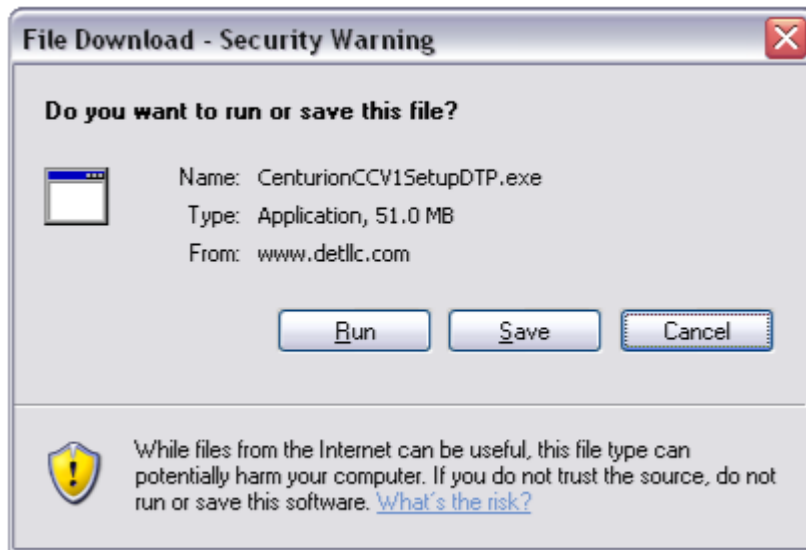
2 **Charging The Omega**

Plug your Omega into Your PC using the USB A side on the PC and the Micro B side into your Omega USB port (located on the back panel of the unit under the screw port cover). Allow 8 hours minimum for a full charge.

The Omega uses a standard USB cable to communicate to other devices and as its charging cable. When you first receive the Omega we recommend that you charge your unit completely (4 – 8 hours) before use. The Omega will have power as it was tested before it was shipped, but a full charge may not have been done at the factory.

3 **Install the Software**

NOTE: If you already have Centurion installed, you can skip this step. To communicate to the Omega using a PC you need to install the Centurion Software. To install Centurion you will need to download it first from our website at <http://diamondtraffic.com> and choose the package you purchased or want to demo. After you have clicked the download link for the software package, you must run the download for the installer to start. On the following screen click the “Run” option to install once downloaded.



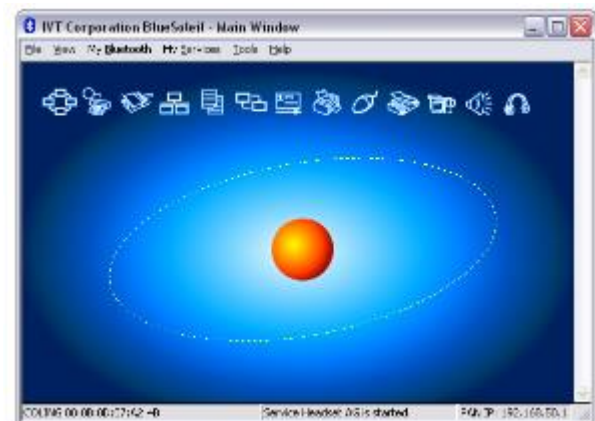
Once the software download is complete the windows installer should start automatically. Follow the steps in the installer to complete the software installation. When prompted to install the “Software Only” or software with USB drivers (complete) you must choose the complete install to allow the installation of the Omega USB driver to communicate.

- A Click **Start**, Click **Run**, and type in **msconfig** and click **OK**
- B Click the **Services** tab and uncheck **Bluetooth Support Services** by Microsoft Corporation. Click **Apply** and click **OK**.
- C Click **Restart**.
- D After restarting your computer, the System Configuration Utility will appear. Check **Don't show this message** and click **OK**.

4 Connect the OMEGA with the Bluetooth PC

After Bluetooth® is installed you will need to establish a link with the Omega using the Bluetooth® software provided by the USB key manufacturer. This guide will provide an example using the Blue Soleil software to initiate a link.

- A Start the Blue Soleil software by either double clicking the Blue Soleil icon on the desktop or the Bluetooth® Icon in the system tray.
- B Using the Magnet provided swipe the magnet to the left front of the Omega to turn the display on (this will activate the Bluetooth® wireless in the counter). Once the display has come up click the orange globe to search for the Omega device.

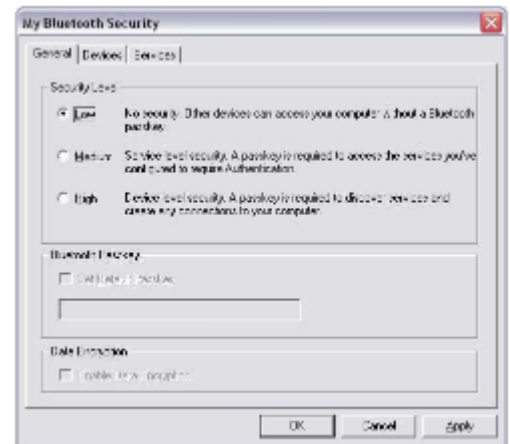
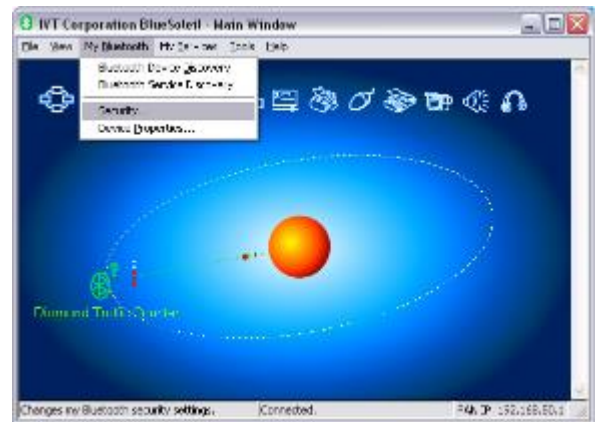
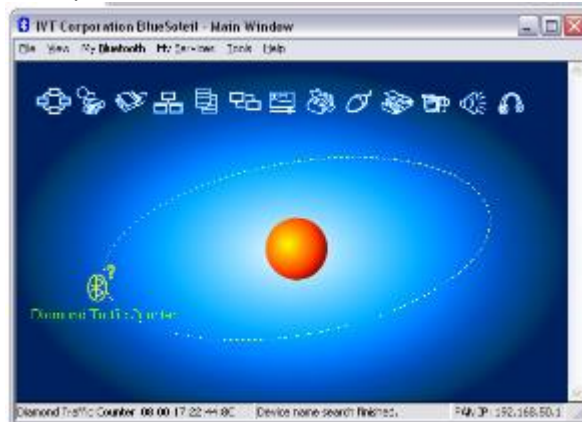


- C Once the counter is identified click **My Bluetooth** in the menu bar and select **Security**.

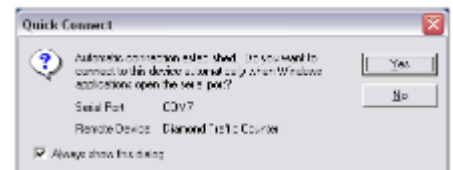
Change the settings to Low to not require a Pass key to connect and click **OK**.

NOTE: The OMEGA does not use pairing and will not work with security settings on.

- D Double-click the Bluetooth® icon to identify the Traffic counter and to identify the serial port service. Click on the yellow serial cable picture to activate the service.



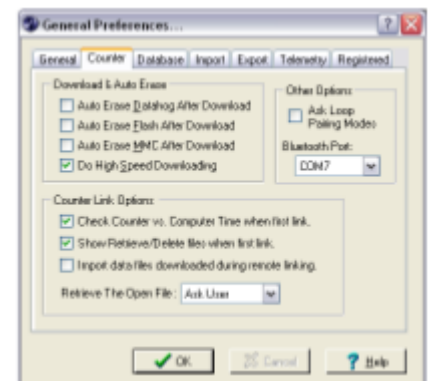
- E The Connection Dialog will appear. Click Yes to continue and a connection will be established. Make note of the Serial port assigned to the Bluetooth® connection as you will need to enter it in to the Centurion Setup.



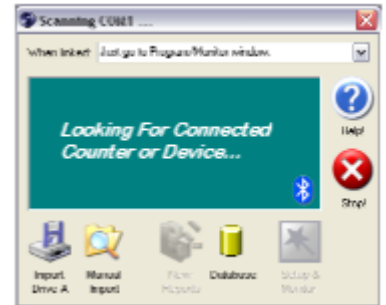
5 Connect to the OMEGA using Centurion

Start Centurion and go to **File > Preferences**.

- A Change the Bluetooth Port drop down to the assigned port by the Blue Soleil software and click **OK**.



- B Go to the Counter menu and select Start scanning for device. In the Scanning Window select the Bluetooth icon in the lower right corner to scan for the Omega.



- C With the connection established, programming and downloading the Omega will now be available via the PC.



NOTE:

Typical transmission distance is up to 30 feet (10 meters). Your transmission range may vary depending on obstructions and equipment type.



Diamond Traffic Products
76433 Alder Street
Oakridge, OR 97463
diamondtraffic.com

Phone 541.782.3903
Fax 541.782.2053
sales@diamondtraffic.com